



Tillbridge Solar

Statutory Consultation Leaflet

May 2023

Introduction

Following on from our first Community Newsletter in October 2022, which introduced Tillbridge Solar, this leaflet outlines our statutory consultation proposals for the project.

The project, known as Tillbridge Solar (the "Scheme"), would allow for the generation, export and import of electricity with an anticipated capacity greater than 50 megawatts (MW), and could power up to 300,000 UK homes. The Scheme would also store energy on site for when it is needed most by homes and businesses.

Our statutory consultation will run for six weeks, from **Tuesday 30 May to Tuesday 11 July 2023**. During this time, we want to hear your views on our detailed design proposals for the Scheme, including our preliminary environmental information and how we are planning to minimise the impact of the Scheme.

This leaflet provides details of this statutory consultation, including our upcoming consultation events and where you can find more information. We hope you can attend an event and we welcome your comments. If you have any questions, please get in touch using the contact details at the end of this leaflet.



About Tillbridge Solar

Tillbridge Solar Limited is developing proposals for a new solar and energy storage project that would involve the installation of solar photovoltaic (PV) generating panels and on site energy storage facilities within Lincolnshire. The Scheme would also include infrastructure for connection to the national grid at Cottam substation in Nottinghamshire.

The decommissioning of the previous coal-fired Cottam power station has provided additional spare grid connection capacity and the opportunity for the region to play an important role in renewable energy generation in years to come.

The solar PV panels and energy storage facilities would be located on land to the south, east and south-east of Gainsborough (the "Principal Site"). The Scheme would then connect to National Grid's Cottam substation in Nottinghamshire via an underground electricity cable (within the "Cable Route Corridor"). **A high-level map showing the location of our proposals is shown on page 5 of this leaflet.**

Who we are

Tillbridge Solar

Tillbridge Solar Limited is a joint venture partnership between Tribus Clean Energy Ltd and Canadian Solar, who are both experienced developers of renewable energy projects. They are being supported by a team of experienced technical specialists.

TRIBUS

Tribus Clean Energy Ltd specialises in the development of renewable energy projects and has a UK solar PV development pipeline of over 1.5 gigawatts (GW) and a pipeline of more than three gigawatt hours (GWh) of Battery and Energy Storage Systems (BESS).

CanadianSolar

Canadian Solar is a leading manufacturer of solar PV modules and provider of solar energy solutions, with a UK solar development pipeline of over 2GW and more than 4GWh of BESS.

Our vision for Tillbridge Solar

Our vision for Tillbridge Solar is to deliver cleaner, greener, and lower-cost energy, while also enhancing the local environment and ensuring we are a responsible developer.

We recognise the impacts associated with multiple projects being developed in the region.

Given the proximity of Tillbridge Solar to other solar projects, we have explored opportunities for collaborative working, particularly where there are common interests to reduce the potential impacts of the Scheme on local communities and the environment, include along our Cable Route Corridor.

Our objectives for Tillbridge Solar are to:



Build a solar farm that will contribute to the UK's zero-carbon future and support Lincolnshire's transition to Net Zero.



Increase biodiversity and enhance existing ecology to achieve Biodiversity Net Gain and maximise opportunities to create new habitats for wildlife.



Provide equivalent energy needs for around 300,000 households with low-cost energy, generated in the UK at a time of great uncertainty within the energy market.



Ensure the local landscape is central to the Scheme's design.



Develop a Scheme in a responsible and considerate way.



Provide opportunities for local communities and the local economy.

Our early-stage engagement

In July 2022, we held a series of collaboration workshops in the area with elected representatives, such as local councillors and parish councils, along with representatives from environmental and community groups. The workshops allowed us to introduce our early-stage proposals.

We want to thank everyone who took part in the workshops – we are grateful for the feedback we’ve received to date. This engagement has helped shape the Scheme and allowed members of the community and other stakeholders to discuss key aspects of our plans in more detail.

Statutory consultation

We are now inviting you to take part in this statutory consultation on our detailed proposals for Tillbridge Solar. Our consultation is running from Tuesday 30 May to Tuesday 11 July 2023.

As part of this consultation, we are providing updated information on our more developed proposals, including the proposed Principal Site layout and the refined Cable Route Corridor. We have been using feedback from our early-stage and ongoing engagement to inform our design of the following areas:

- A ‘Principal Site’ of approximately 1,400 hectares (ha), which comprises 900 ha of developable area (where all solar PV panels and associated infrastructure would be located), and 500 ha of non-developable areas (which is being considered for environmental mitigation and enhancement measures).
- An underground electricity Cable Route Corridor, approximately 16 km in length, connecting the Principal Site to National Grid’s Cottam Substation.

We are also providing a Preliminary Environmental Information (PEI) Report and non-technical summary (NTS) of the PEI Report, which describe the initial results of our environmental surveys that we have been undertaking as part of the Environmental Impact Assessment (EIA) process.

Details of how to access our updated information, including detailed site layouts, and how to get involved in this consultation is provided on page 6 of this leaflet.

A full summary of our collaboration workshops, including the key issues and information discussed, can be found as a report on our website www.tillbridgesolar.com. This report also provides a summary of comments received during the workshops and how we are continuing to refine the Scheme in response to these.

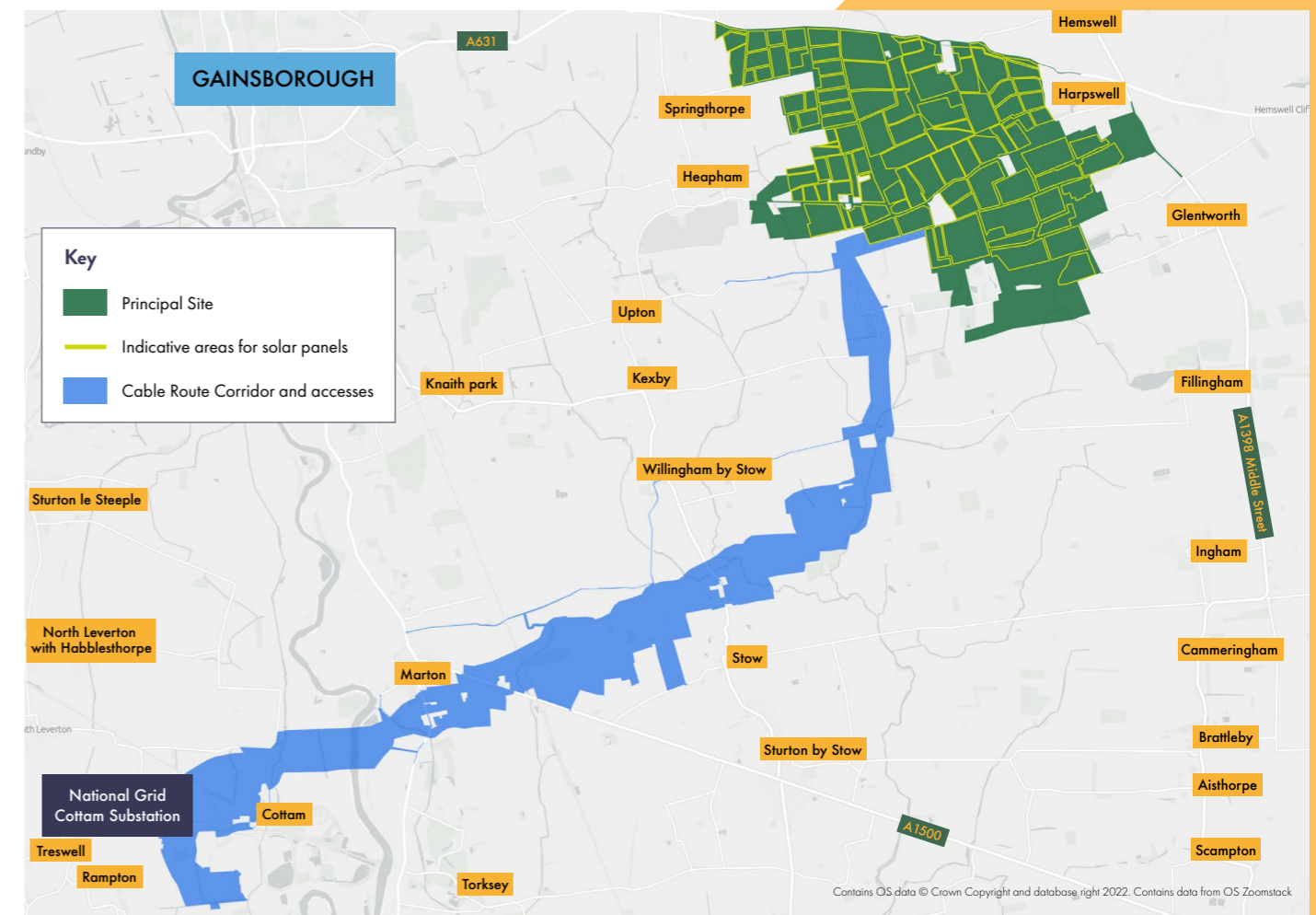


A Statement of Community Consultation (SoCC), which sets out how we intend to consult people ahead of our application for development consent for the Scheme, was prepared with reference to guidance on pre-application consultation published by the Government and the Planning Inspectorate (PINS). We also consulted with, and have had regard to, comments from local planning authorities regarding the SoCC.

The location of our proposals

More information

You can use our Interactive Map online to find locations of interest. Our project information booklet includes an indicative site layout plan for the Principal Site. The booklet can be found on our website, in hard copy at our events or can be sent free of charge on request.



Have your say

Your feedback is important to us and will help to shape our final designs. You can learn more about our proposals and provide feedback in the following ways:

- Come along to one of our consultation events, where you can meet the project team, learn about our proposals, and provide your feedback using a feedback questionnaire
- Visit the Scheme webpage to view our latest information, including our full suite of statutory consultation documents and interactive map, and provide your feedback via an online version of the feedback questionnaire
- Visit one of our information points to view hard copies of the statutory consultation materials and collect a feedback questionnaire
- Contact our communication lines via phone, post or email (using the details on page 12) to request a feedback questionnaire or ask questions about the consultation
- Complete and post a feedback questionnaire back to us via **FREEPOST: TILLBRIDGE SOLAR** (please note that you do not need a stamp).

We recommend that you view our updated plans in more detail to help inform your consultation response. This includes our PEI Report (summarising the findings of our initial studies), which is designed to help you understand the likely environmental effect of the Scheme and the mitigation measures proposed, and the NTS.

All of these documents can be found on our website. We can also provide these documents on a USB device, free of charge on request, which are limited to one per household. Hard copies of the project information booklet, feedback questionnaire and NTS will be available at the consultation events. If you would like a hard copy of the PEI Report or other consultation documents, a reasonable charge to cover printing and postage costs of £0.35 per page will apply.

If you require materials in an alternative format (e.g. large print or braille) please let us know.



Our events

We are holding a series of public information events as part of our statutory consultation. These will give you the opportunity to view all of the consultation materials on our more developed and detailed proposals for Tillbridge Solar.

You can submit your feedback in writing at the events via a feedback questionnaire or take a feedback questionnaire away to post back to us. We encourage anyone with an interest in the Scheme to come along. We are also holding two webinar events for those unable to attend in-person sessions to ask questions.

Venue	Date	Times
Online webinar (please visit our website or get in touch to register)	Wednesday 7 June	6:30pm to 8pm
Glentworth Village Hall, Stoney Lane, Glentworth, DN21 5DF	Wednesday 14 June	2:30pm to 7pm
Willingham Village Hall, High St, Willingham by Stow, Gainsborough, DN21 5JZ	Saturday 17 June	10am to 2pm
Sturton by Stow Village Hall, High St, Sturton by Stow, Lincoln, LN1 2AE	Thursday 22 June	1:30pm to 5:30pm
Corringham Village Hall, 10 Middle St, Corringham, Gainsborough, DN21 5QR	Friday 30 June	12pm to 4pm
Rampton Village Hall, Manor Grounds, Rampton, Retford, DN22 0JU	Saturday 1 July	10am to 2pm
Hemswell and Harpswell Village Hall, Maypole Street, Hemswell, DN21 5UL	Thursday 6 July	2:30pm to 6:30pm
Online webinar (please visit our website or get in touch to register)	Monday 10 July	6:30pm to 8pm

Local information points

There are a number of locations within the local area where you are able to access hard copies of our statutory consultation materials. These locations are:

<p>West Lindsey District Council Office</p> <p>Guildhall Marshall's Yard, Marshalls Yard, 13b Beaumont St, Gainsborough, DN21 2NA</p> <p>Monday to Friday (9am to 5pm)</p>	<p>Lincoln Central Library*</p> <p>Free School Lane, Lincoln, LN2 1EZ</p> <p>Monday to Wednesday and Friday (9am to 5pm), Thursday (9am to 6pm), and Saturday (9am to 4pm)</p>
<p>Gainsborough Library*</p> <p>Cobden St, Gainsborough, DN21 2NG</p> <p>Monday to Wednesday and Friday (9am to 5pm), Thursday (9am to 6pm), and Saturday (9am to 1pm)</p>	<p>Saxilby Library*</p> <p>St Andrews Centre, William St, Saxilby, LN1 2LP</p> <p>Tuesday (10:30am to 3:30pm), Wednesday (10:30am to 4pm) and Friday (10:30am to 1pm)</p>
<p>Retford Library*</p> <p>Churchgate, Retford, DN22 6PE</p> <p>Monday to Friday (9am to 6pm) and Saturday (9am to 3pm)</p>	

Materials available to collect at these locations include copies of feedback questionnaires and additional copies of this leaflet. Printed copies of the Statement of Community Consultation (SoCC), more detailed project information booklets, full PEI Report and NTS will be available at each of these locations to inspect (but not take away).

We recommend contacting the venues to check the opening times before visiting.

*Computer access will be available in these locations.

Navigating our consultation documents

We are carrying out a formal stage of statutory consultation in line with the requirements of the Planning Act 2008. We've prepared a set of documents and materials to explain the proposals we're consulting on to help you provide feedback.

All documents can be found on the website from 30 May 2023 at: tillbridgesolar.com/documents-library

Document	Summary
Project information booklet	Provides detailed information on the Scheme, the planning process, what we're consulting on and how our plans have evolved over time, including an indicative site layout plan for this consultation. This can be found on our website, in hard copy at our events or can be sent free of charge on request.
Feedback questionnaire	Allows you to provide comments on our proposals. You can collect this from our events, a local information point or by request. You can also provide your feedback online.
Preliminary Environmental Information (PEI) Report	Explains what effects we believe the Scheme would have on the environment and the measures we are proposing to reduce the impacts. This includes a main report, figures, maps and plans. You can view this online, in hard copy at our events, or request a USB device. If you would like a hard copy of the PEI Report, a reasonable charge to cover printing and postage costs of £0.35 per page will apply.
Non-technical summary (NTS) of the PEI Report	An NTS of the PEI Report is also available to view on the Scheme website and at our consultation events. A hard copy of the NTS can be sent free of charge on request.
Interactive map	Allows you to search for areas of interest, including explanations of the individual Scheme elements. You can view this on our website.
Maps and plans	A series of maps and plans for the Scheme are also available on the Scheme website and at our consultation events, including its location in relation to other solar schemes in the region.
Statement of Community Consultation (SoCC)	The SoCC sets out how we intend to consult people ahead of our application for development consent for the Scheme. The SoCC can be found on our website, in hard copy at our events or can be sent free of charge on request.

Working with other solar developers

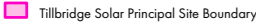





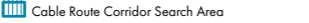
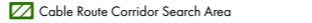
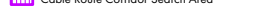
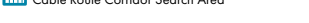
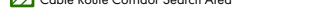
We are aware there are a number of other proposed solar developments in the area and understand the uncertainty around some of the impacts these projects could cumulatively have on local communities. This includes separate proposals from Low Carbon for their Gate Burton Energy Park and from Island Green Power for their West Burton and Cottam Solar projects.

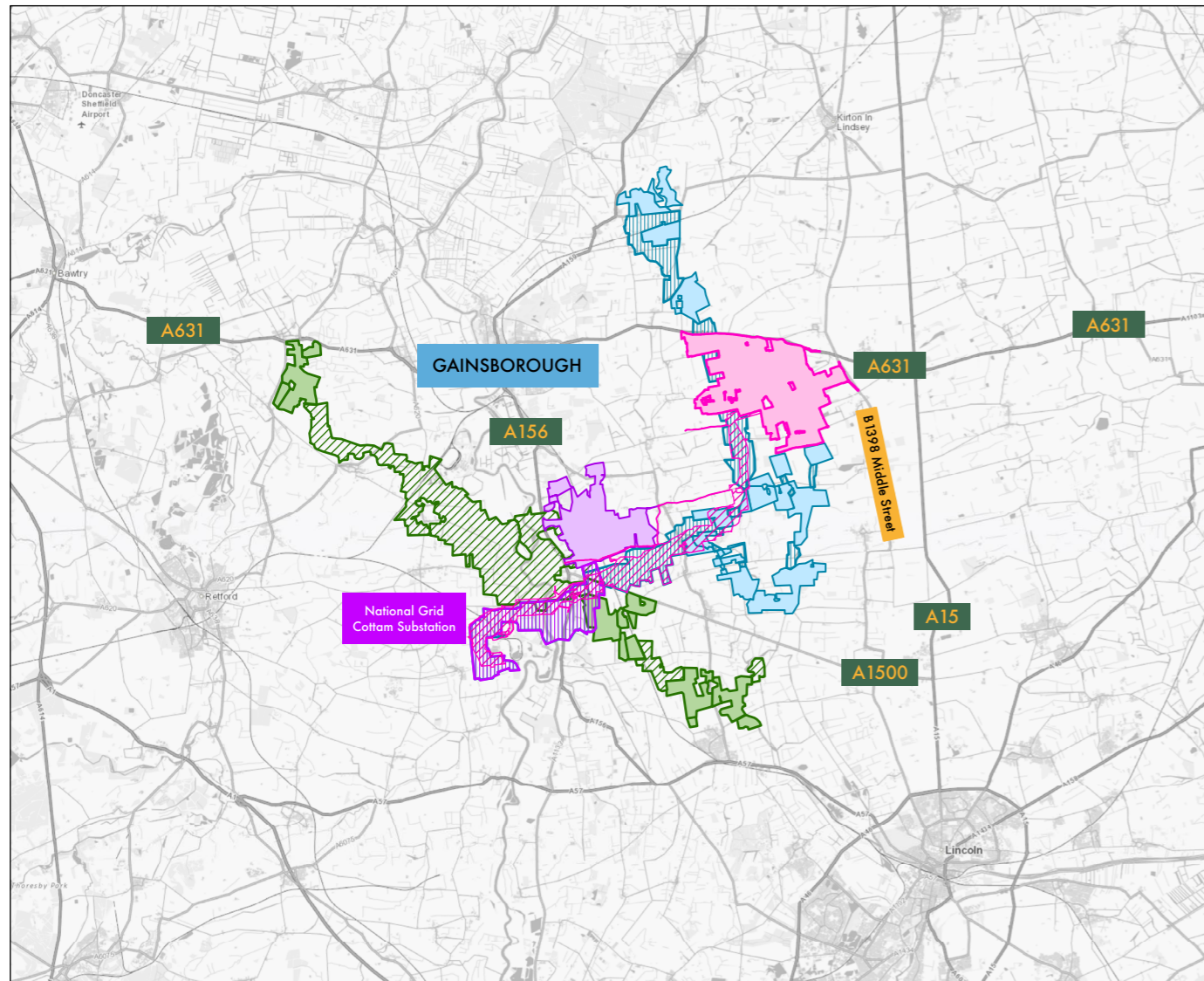
We have been, and will continue to work constructively with both developers to make sure that local residents are fully informed about each of the different solar proposals.

We are also working to ensure that all environmental effects are fully assessed, and mitigation provided where possible, with this early information now available as part of the 'Cumulative Impacts' section of our PEI Report.

Our discussions so far have also centred around cable route installation, aiming to ensure as little disruption to the local community as possible. You will be able to view more information on this in our project information booklet as part of our statutory consultation.

Key

 Tillbridge Solar Principal Site Boundary	 Gate Burton PEI Report red line boundary	 Cottam Solar project PEI Report red line boundary	 West Burton project PEI Report red line boundary
 Cable Route Corridor Search Area	 Principal Site	 Principal Site	 Principal Site
	 Cable Route Corridor Search Area	 Cable Route Corridor Search Area	 Cable Route Corridor Search Area



Indicative project timeline



- Summer 2022**
 Initial engagement with stakeholders, including collaboration workshops
- September 2022**
 EIA Scoping Request submitted to the Planning Inspectorate
- Spring 2023**
 Publication of our Statement of Community Consultation (SoCC) and ongoing development of our EIA
- May - July 2023**
 Statutory consultation to be held with community and technical stakeholders, including sharing the findings of our PEI Report
- Winter 2023**
 Anticipated submission of DCO application to the Planning Inspectorate for public examination
- 2024 - 2025**
 DCO examination and decision
- Autumn 2025**
 Anticipated start of construction

Contact details

If you have any questions about the Scheme or consultation, please get in touch using the channels below. Our communications lines will remain open throughout the statutory consultation and after the consultation has closed on 11 July 2023.

It is important you submit your feedback to us before the closing date, so that it can be considered in our proposals. The deadline for responses is **23:59 on Tuesday 11 July 2023**.

Please also let us know if you would like to be kept up to date with the latest Scheme updates, which we can provide by post and/or email.



www.tillbridgesolar.com



info@tillbridgesolar.com



0800 046 9643



FREEPOST TILLBRIDGE SOLAR

(please note that you do not need a stamp)

You can also sign-up for updates and contact us using our comment form on our website.

If you would like this document in large print, audio or braille formats, please contact us using the details above.